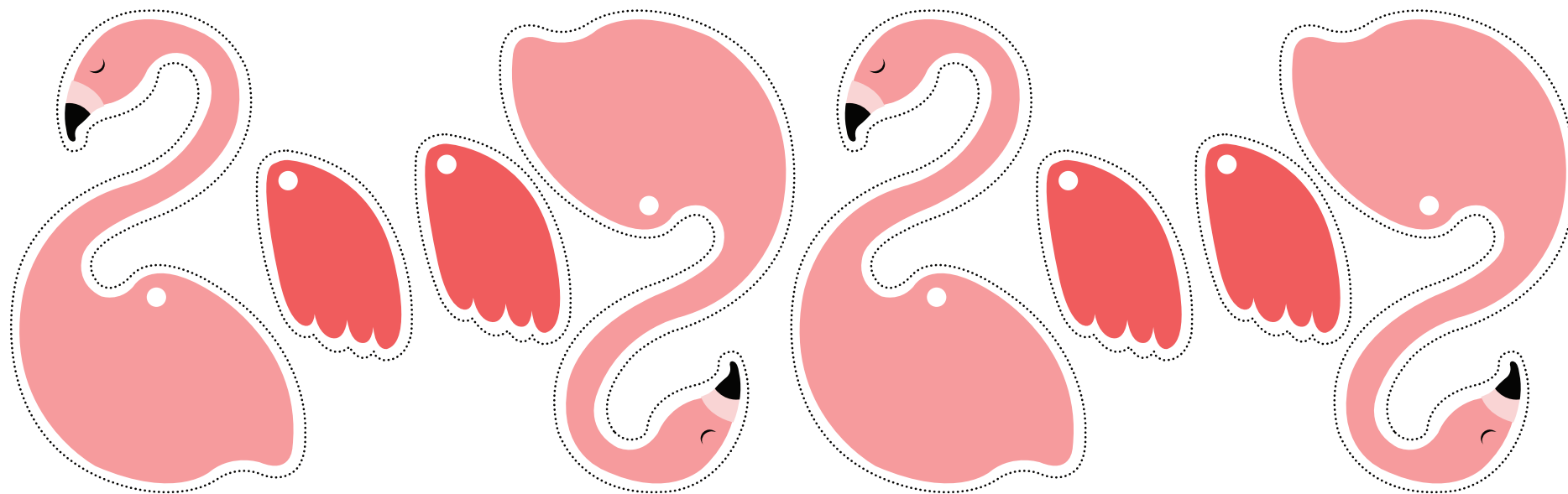


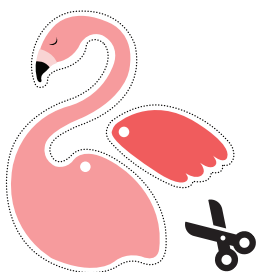
PINK FLAMINGO

straw decoration

EXCLUSIVELY DESIGNED FOR NEST MAGAZINE BY WITA FROM DESIGN IS YAY



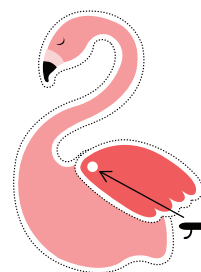
INSTRUCTIONS



1. CAREFULLY CUT ALONG THE DOTTED LINES USING SCISSORS

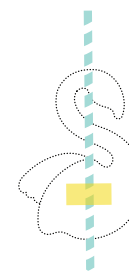


2. PUNCTURE THE WHITE DOTS WITH A NEEDLE OR X-ACTO KNIFE (YOU DON'T HAVE TO MAKE A PERFECT CIRCLE HOLE FOR THIS)



EMBELLISHMENT BRADS

3. INSERT A SMALL EMBELLISHMENT BRADS INTO THE OVERLAPPING HOLES AND SECURE THE BACK.



4. STICK THE BACK ONTO STRAW USING STICKY TAPE



5. ENJOY!